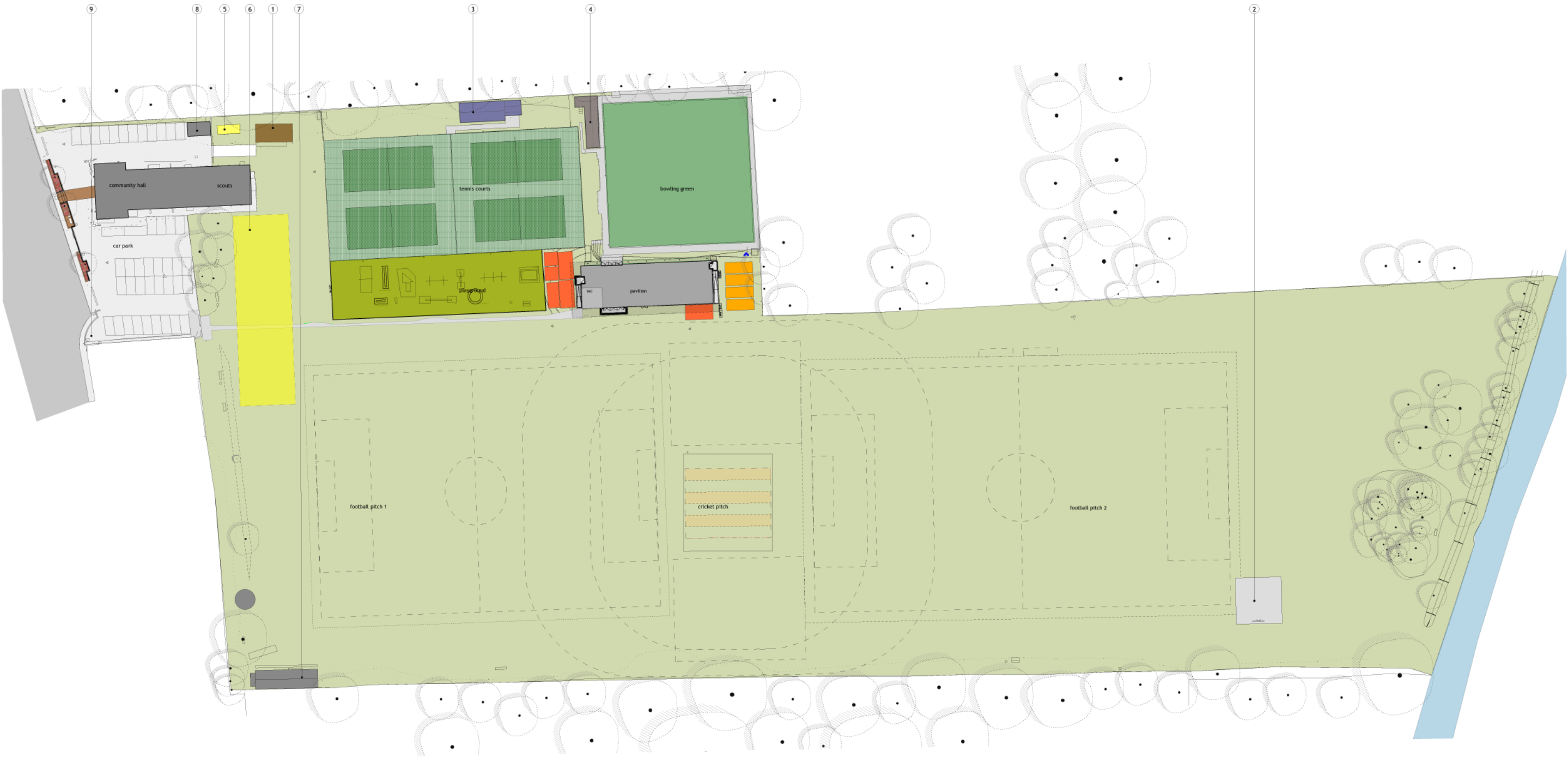
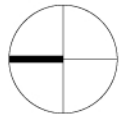


EXISTING PLAN



- Key

 - 1 Existing Skate Ramp
 - 2 Existing Basketball Court
 - 3 Existing Tennis Clubhouse
 - 4 Existing Bowling Clubhouse
 - 5 Great Shelford Feast Storage Container
- 6 Location of Great Shelford Feast Main Tent
 - 7 Grounds Manager Storage
 - 8 Existing Substation
 - 9 Existing Bicycle stands
- Cricket Club Storage
 - Football Club Storage
 - Tarmac Path Routes
 - Turf
 - Wetpour Safety Surfacing



AGREED PLAN 01.17



- Key

1 New Skate Area

2 New Basketball/Football Area

3 Existing Tennis Clubhouse

4 Existing Bowling Clubhouse

6 Location of Great Shelford Feast Main Tent

7 Great Shelford Feast Food Tent

8 Great Shelford Feast Storage

9 Relocated and Additional Car Park Spaces

10 Playground

11 Picnic Lawn

12 Scout's External Area

13 New Decked Area

14 New Pedestrian Entrance

15 Bicycle Parking

16 Drop Down Bollards to Allow Vehicular Access When Required

17 Shared Access Bowling Green and Tennis Club

18 Cricket Covers Storage

19 Park Keeper Storage

20 Cricket Club Storage

21 New and Additional Football Storage (4 Goals and Additional Space)

22 Electrical And Water Supply Point

23 New Climbing Tree Play Structure

26 Potential Site for Shared WC for Bowling and Tennis Club

27 Cricket Storage, (Practice Nets and Screens)

Cricket Club Storage

Football Club Storage

Main Routes

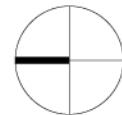
Long Grass and Meadow Areas
-

PROPOSED MASTERPLAN 30.03.17

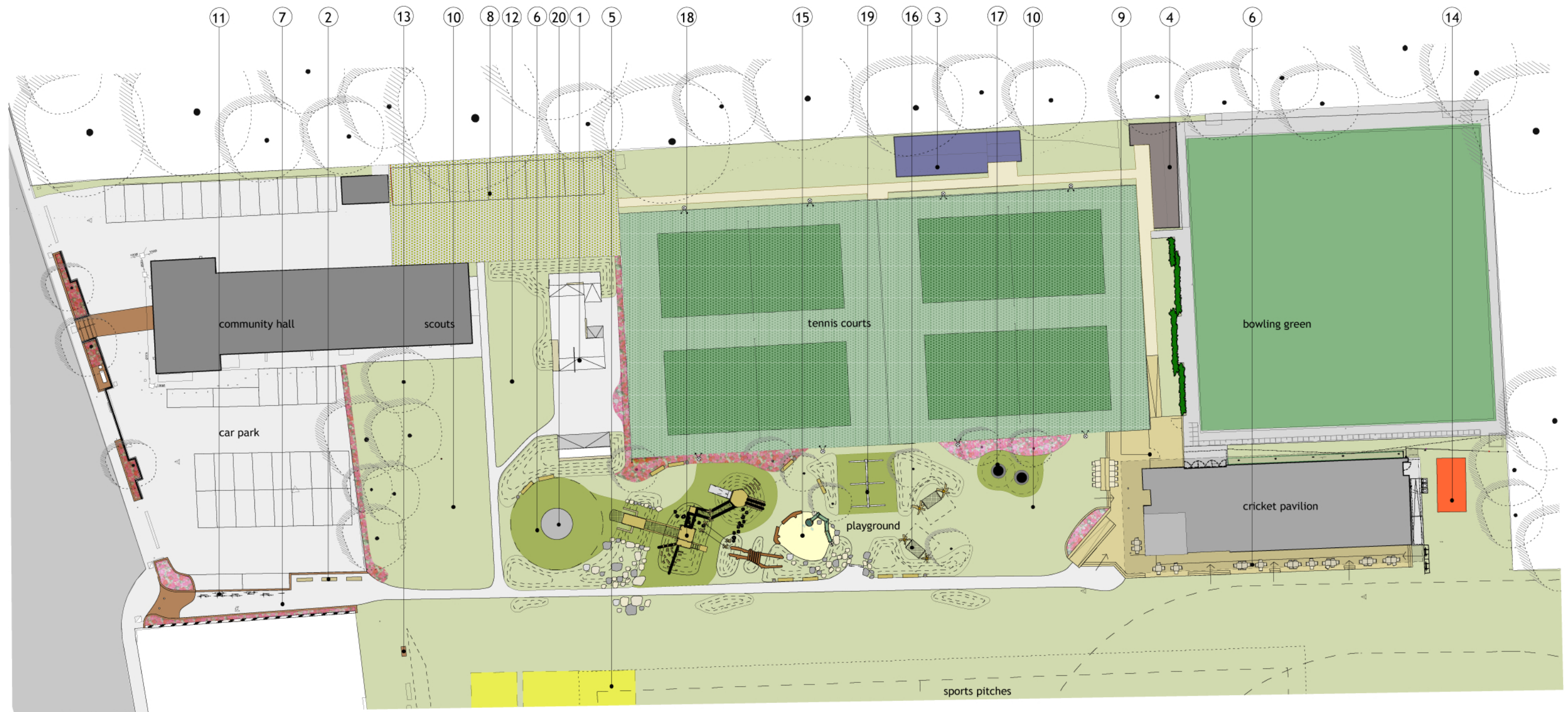


Key

- | | | | |
|---------------------------------------|--|---|--|
| 1 New Skate Area | 8 Relocated and Additional Car Park Spaces | 15 Removable Benches to Allow Vehicular Access When Required | 21 Cricket Practice Net |
| 2 New Basketball/Football Area | 9 Playground | 16 Shared Access Bowling Green and Tennis Club | 22 Existing shelter with new planting and new timber seating |
| 3 Existing Tennis Clubhouse | 10 Picnic Lawn | 17 Cricket Club Storage (Pitch Covers and Screens) | 23 Tree climbing playstructure |
| 4 Existing Bowling Clubhouse | 11 Scout's External Area | 18 Park Keeper Storage | 24 Rec Storage |
| 5 Great Shelford Feast Main Tent | 12 New Decked Area | 19 New and Additional Football Storage (4 Goals and Additional Space) | |
| 6 Great Shelford Feast Reception Tent | 13 New Pedestrian Entrance | 20 Electrical And Water Supply Point | |
| 7 Great Shelford Feast Food Tent | 14 Bicycle Parking | | |
- | |
|--------------------------|
| Cricket Club Storage |
| Football Club Storage |
| Tarmac Path Routes |
| Grasscrete |
| Turf |
| Wetpour Safety Surfacing |



PROPOSED PLAN 30.03.17

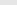
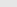






Key

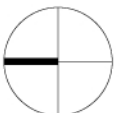
- | | |
|---|---|
| ① New Skate Area | ⑥ New Decked Area |
| ② Removable Benches to Allow Vehicular Access | ⑦ New Pedestrian Entrance |
| ③ Existing Tennis Clubhouse | ⑧ Additional Car Park Spaces |
| ④ Existing Bowling Clubhouse | ⑨ Shared Access Bowling Green and Tennis Club |
| ⑤ Location of Great Shelford Feast Main Tent | ⑩ Picnic Lawn |

- 11 Cycle Parking
- 12 Scouts Lawn
- 13 Electrical And Water Supply Point
- 14 Cricket Club Storage Practice Net
- 15 Sand and Water Play Area

- 16 Hammock Swings
- 17 Trampolines
- 18 Climbing Structure
- 19 Swings and Toddler Swings
- 20 Roundabout

-  Main tarmac pedestrian route
-  Grasscrete surface
-  Turf Surface
-  Wetpour safety surfacing
-  Play Sand

 Existing tennis flood lights



VIEW THROUGH THE REC



Existing view through the Rec



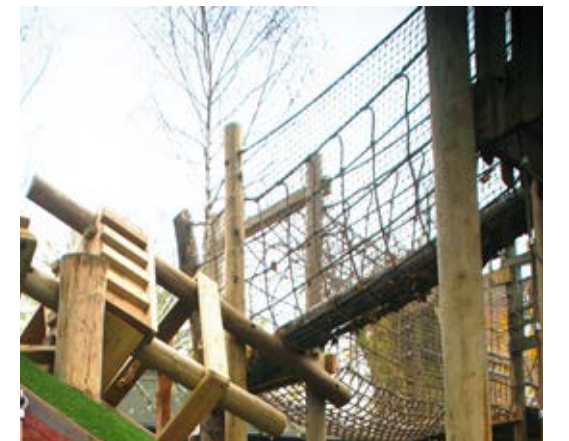
AXONOMETRIC VIEW OF THE REC



SANDPIT / WATERPLAY



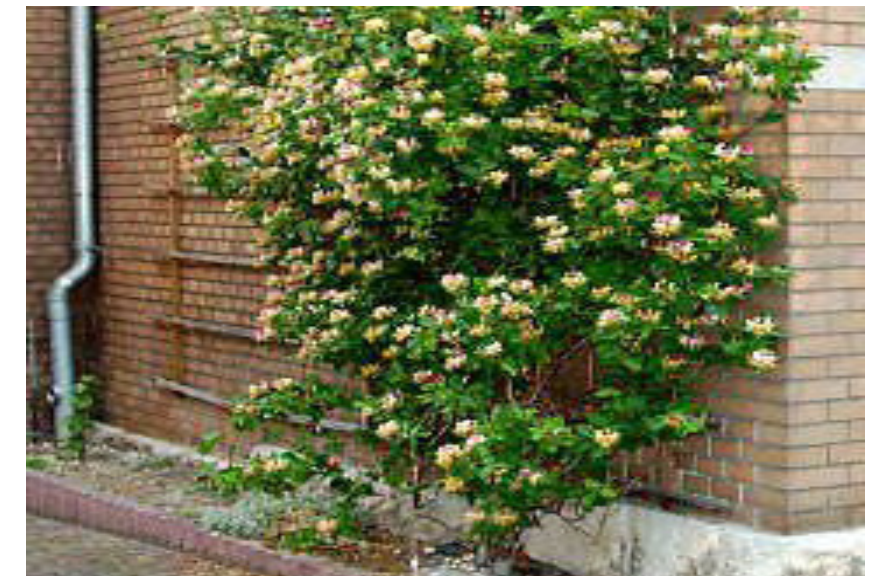
CLIMBING STRUCTURE



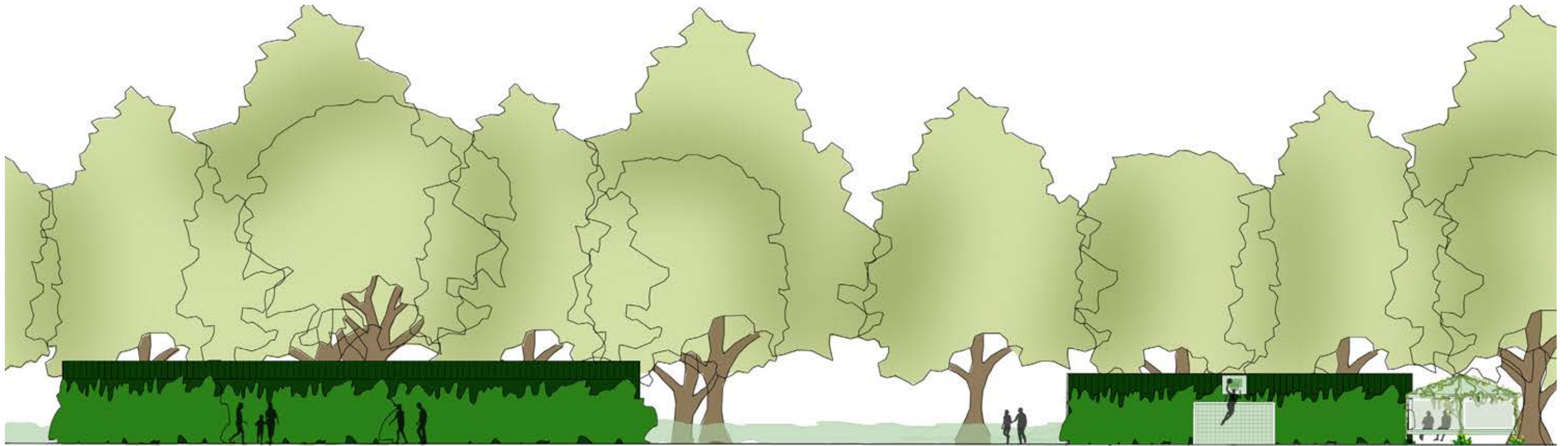
SWINGS AND ROUNDABOUTS



SKATEPARK



STORAGE SHEDS



PLANTING PALLETTE

HEBACIOUS/
GRASSES

- Anemanthele lessoniana
- Carex elata ‘Aurea’
- Miscanthus sinensis ‘Morning Light’
- Stipa lessingiana
- Hordeum jabatum (Squirrl Tail Grass)
- Salvia nemorosa ‘Amethyst’
- Pennisetum
- Deschumpsoa cespitosa (Tufted Hair Grass)
- Carex elata ‘Aurea’
- Miscanthus sinensis ‘Morning Light’
- Stipa lessingiana
- Hakonechloa macra



CLIMBERS

- Honeysuckle
- English Ivy

